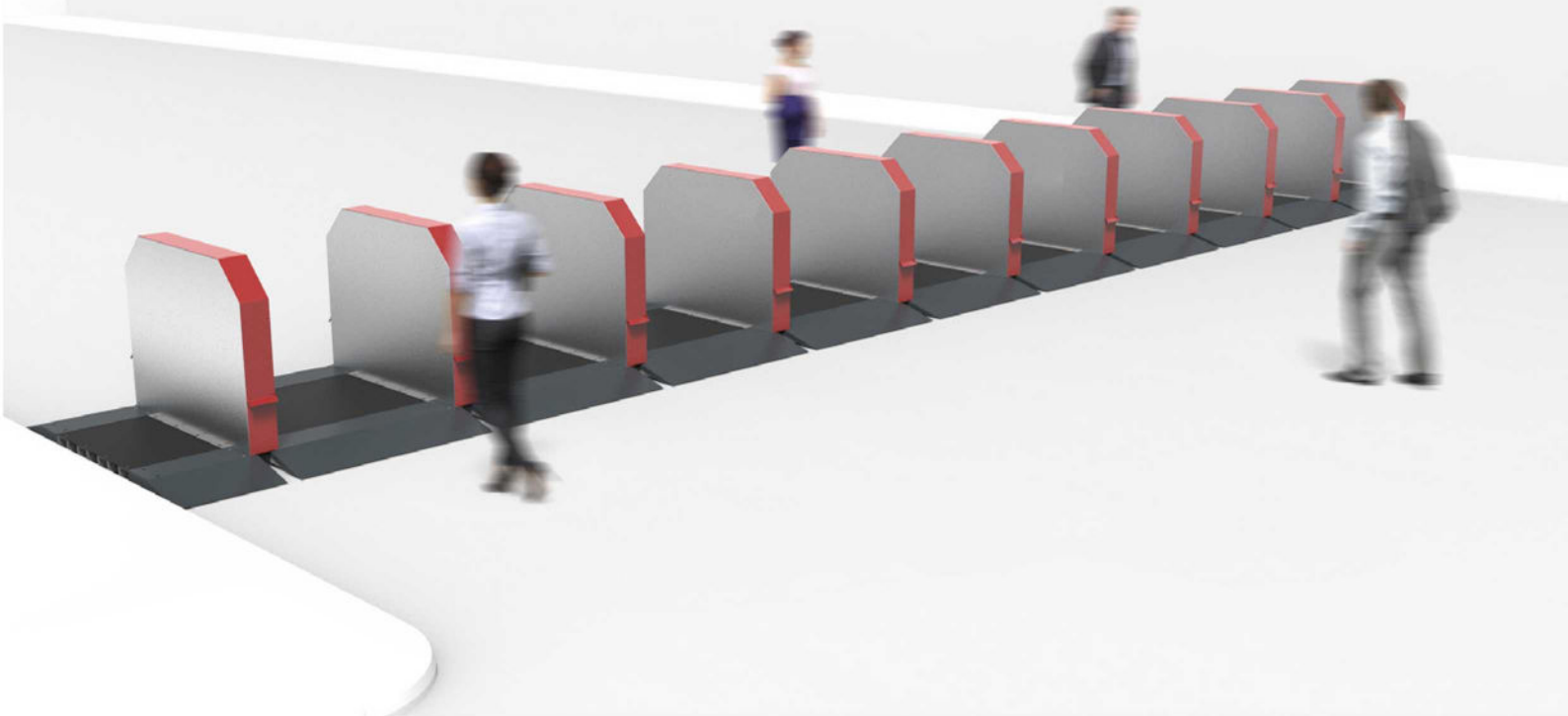


## RhinoGuard® Steel GateKeeper™

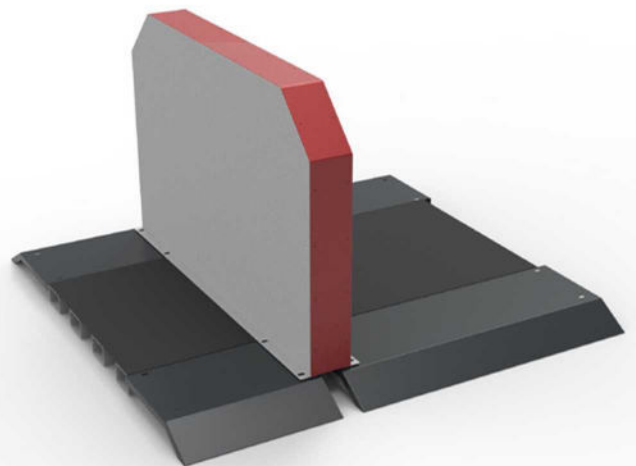
### Temporary Hostile Vehicle Mitigation solution



The RhinoGuard® GateKeeper™ range provides temporary protection measures for a number of applications such as Christmas markets or sporting events.

The steel GateKeeper™ has been successfully crash tested to IWA 14.1, providing protection against vehicles weighting up to 2.5 tonnes travelling up to 30mph.

The tested solution is pedestrian permeable, with vehicle access points and requires no anchorage in any form. The system can be quickly deployed across all surfaces without relying on kerbs or structural aids.



Security Rating: IWA14.1 V/2500 (N1G)/48/90:5.2

## RhinoGuard® Steel GateKeeper™

### PROPERTIES

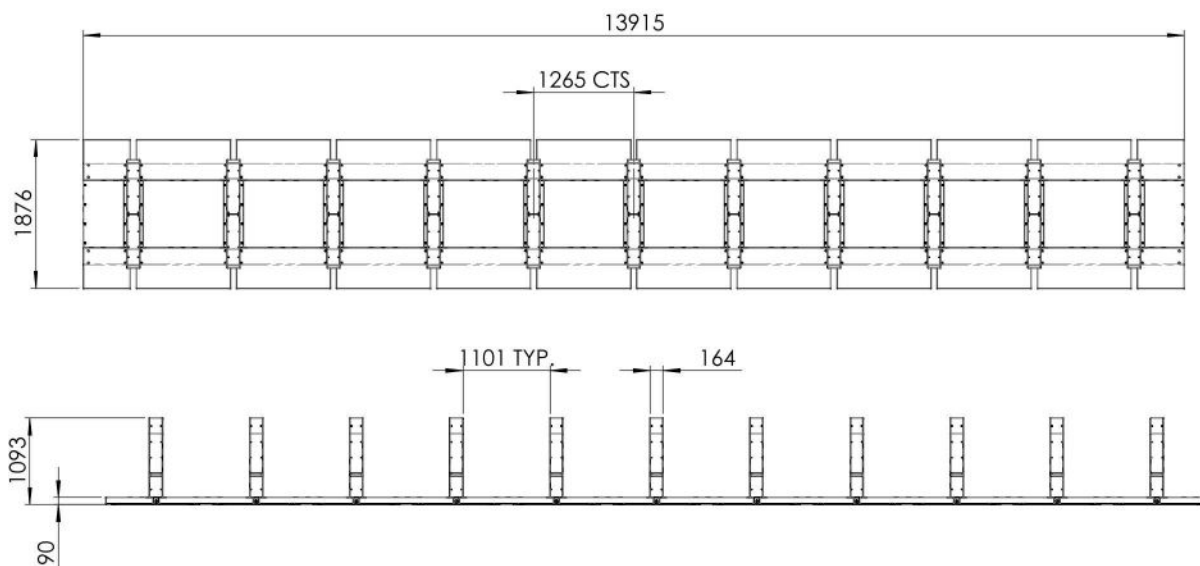
Name	Material	Finish	Individual Module Base Width (mm)	Individual Module Base Length (mm)	Individual Module Base Height (mm)	Individual Module Base Weight (kg)	Shroud Width (mm)	Shroud Length (mm)	Shroud Height (mm)	Shroud Weight (kg)	Overall Individual Module Weight (kg)	Fixing Method
RhinoGuard® GateKeeper™	Mild Steel	Galvanised with the option to powder coat	1725	1876	90	151	164	1292	1000	30	245	Surface Mounted

### CLEANING & MAINTENANCE

Powder Coated Mild Steel

Galvanised mild steel is very effective against corrosion and will require very little maintenance. The addition of powder coating enhances the product aesthetics, whilst being extremely easy to clean and having a long life span. In order to retain aesthetic qualities of products, it is important that they are cleaned regularly. The frequency of cleaning depends upon the environment in which the product is situated. Polyester powder coating can be cleaned using a mild detergent in warm water. All surfaces should be cleaned using a soft cloth, sponge or natural bristle brush.

### TECHNICAL DRAWINGS



### CONTACT US

For further information please contact the Landscape Protection Sales Department on 0370 600 2425 (UK) or +44 1422 312 993 (International).